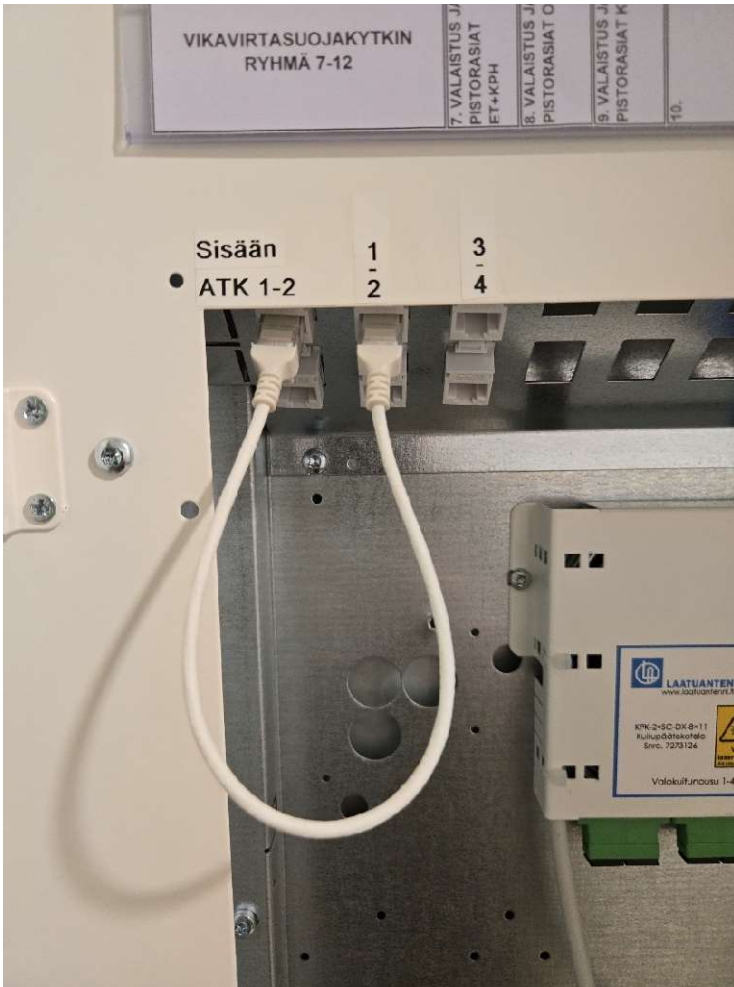


Internet Instructions

How to connect broadband to the data sockets in your apartment.

The building's distribution panel is located in the electrical cabinet in the hallway of the apartment and looks like this:



In the picture, the computer socket is connected via a data cable (RJ45) to apartment socket number 1. if needed, you can switch the connection to sockets 2, 3, or 4.

Connect another data cable from the corresponding socket in your apartment to your computer or wireless modem.

